

## Introducing... The Landscaper's Companion

### Insurance Sales? Heck No!

What could be better than an all-inclusive transplanting product that is also an Insurance Policy for expensive transplants, trees, shrubs, bedding plants, and newly sodded lawns? These big-dollar investments require a Landscaper to **GUARANTEE HIS WORK**.

Check the analysis on Landscaper's Companion® and you can see why it works so well. We like to say, "It's all in there".

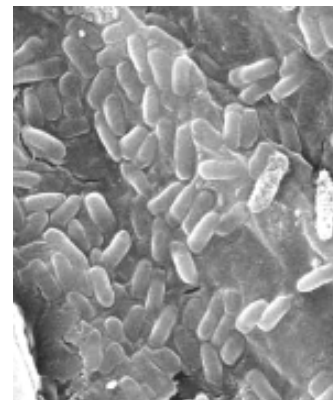


*This delicate new root hair is surrounded by the protective colonies of Bacillus subtilis.*

In planning your customer's new landscaped areas, you can easily sell these added benefits. Your clients will be glad to know you are using the latest technology in transplanting in order to protect their investment.

1. **Head Start** – Landscaper's Companion provides stimulants for new rooting along with stress reducing ingredients to get valuable plants off to a great head start.
2. **Protect** the new growth with billions of natural rhizosphere bacteria that maintain a healthy root system.
3. **Conserve** water and moisture so once left on their own, water is conserved for that new growth thanks to the inclusion of Gelscape®. By using less water the landscaper can save time and money, as well as abide by water restrictions set by local communities.
4. **Save Money** by applying one product that contains all the ingredients a plant needs to grow and thrive.
5. **Additional Points** – It's organic, a granular, saves time, money, and is an easy to use once and done application. One product for all plant species!

The Landscaper's Companion® is your plant's **Health Insurance Policy** to assure survival and productive long-term growth. A few ounces of prevention from The Landscaper's Companion will result in healthier, more beautiful plants and save costly time, labor and plant replacement.



*Landscaper's Companion contains 64 Billion Rhizosphere spores that quickly colonize on the root surface setting up housekeeping cleaning roots and protecting them from stress and invading pathogens.*

To find out where to purchase The Landscaper's Companion, or for additional literature, contact us at 800-648-7626.



*Easy-to-use 8 oz pack treats two trees. Available in retail display trays, tubs with thirty packs per pail, 5 lb and 15 lb bulk pails.*